

The diagram illustrates the correct placement of rank and qualification badges on a sleeve. The left sleeve shows incorrect placement, with the rank badge too high. The right sleeve shows correct placement, with the rank badge centered mid-way between the elbow and the upper shoulder seam. The qualification badges are placed below the rank badge, centered horizontally. A 1 cm vertical distance is indicated between the rank badge and the qualification badges.

ROYAL CANADIAN AIR CADETS
89
PACIFIC

2 cm

2 cm

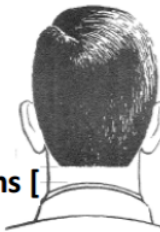
The rank badge is worn centred, mid-way between the elbow and the upper shoulder seam

L'insigne de grade se porte centré, à mi-chemin entre le coude et la couture supérieure de l'épaule


1 cm

Qualification Badges
(Marksmanship, Fitness, Music, Flying)

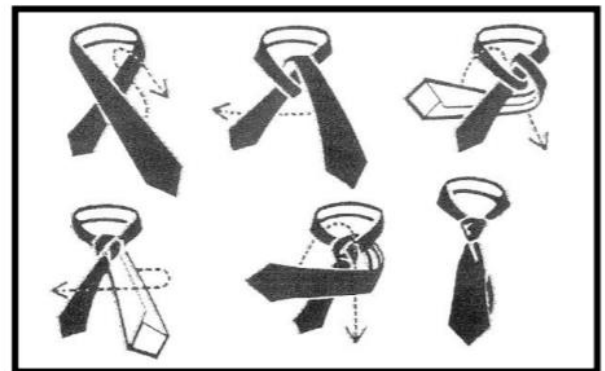
*Natural hair color



Males

- | | | |
|--|---|--|
| <p><u>Females</u></p> <ul style="list-style-type: none"> • No wispies (loose hair) and gelled up. • Hair off collar. • Net and bobby pins are the same color |  | <p><u>Males</u></p> <ul style="list-style-type: none"> • Hair off ears and off collar • No more than 4 cm in bulk & 15 cm in length |
|--|---|--|

Double Windsor knot



IRONING

- Always use a cloth between your uniform and the iron.
- DO NOT directly iron onto your uniform.
- This will help you to AVOID creating STAINS and BURNS
- Always choose the RIGHT SETTING for your fabric

TUNIC

- Iron
- NO creases
- Lint and wrinkle-free
- Collar
- All 4 pocket flaps
- Epaulets
- Placket

BLUE SHIRT

- Ironed (no starch)
- Crease down the centre of each sleeve
- WEAR RANK SLIP-ONS (2)



FRONT



PANTS

- Front creases go all the way up to just inside of the front belt loops
- Rear creases go all the way up to the centre belt loop in the back and should form an upside down V
- Creases go all the way down the pant legs
- Lint and wrinkle-free

REAR



SHINING

- START – by cleaning your boots, remove dust and dirt.
- Use a toothbrush to blacken welts and other parts of the bottom of the boot that don't touch the ground.
- Use KIWI Polish and Cloth
 - Apply basecoat (let polish sit for a bit)
 - Apply water
 - Apply very little polish
 - Polish boot in circular motion
 - Apply water as necessary
- Polish the entire exterior side of the boot (toe, heel, sides, keyhole)
- When done put a cloth over your boots so that they don't get dusty.

BOOTS

LACING BOOTS

